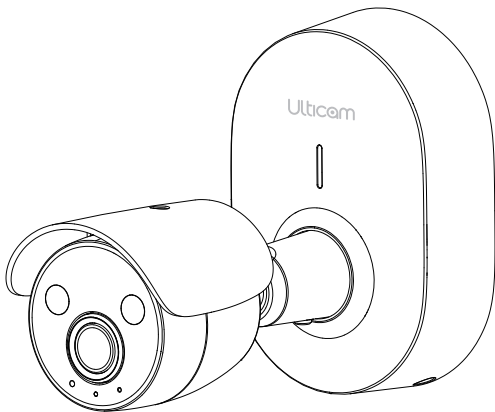


# Smart Security Camera IQ

## User Guide (V1.1)

Ultracom



# Specifications

|                    |   |
|--------------------|---|
| <b>Power:</b>      | DC 12V/2A, PoE  |
| <b>Temp:</b>       | -4°F to 122°F / -20°C to 50°C   |
| <b>Humidity:</b>   | 10% to 90% (non-condensation)   |
| <b>Connection:</b> | 802.11 b/g/n 2.4GHz Wi-Fi, Network Cable, Bluetooth 5.0<br>4G LTE(optional) |
| <b>Storage:</b>    | Internal: Flash Memory 8GB<br>External: SD card support up to 128GB         |

Scan QR code to view the User Guide or visit:  
**[www.ulticam.com/iq/guide](http://www.ulticam.com/iq/guide)**



## Need Help?

For technical documents and more support  
Please visit [www.ulticam.com/support](http://www.ulticam.com/support)  
or call 1-833-858-4226

Privacy Statement: Before using any Ulticam product, please visit the official website: [www.ulticam.com/company/privacy](http://www.ulticam.com/company/privacy) to understand the terms, rules, policies, and regulations. The use of Ulticam products implies your acceptance of the Ulticam Privacy Policy.

# What's in the box?



Ulticam IQ



Mount Plate



Expansion Tube



Screw A/B



Warning Sticker



Allen Wrench

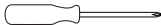


Power Adapter



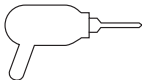
User Guide

## Tools for Set Up



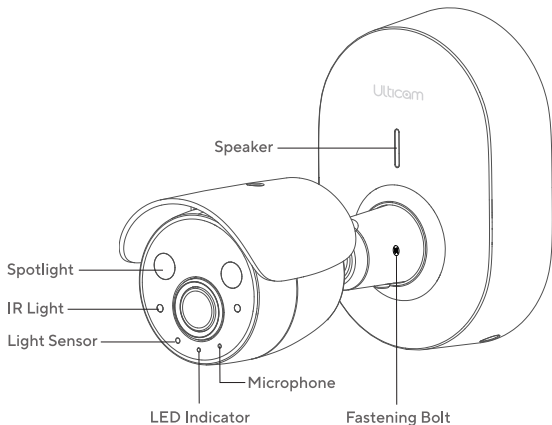
Phillips Screwdriver

+



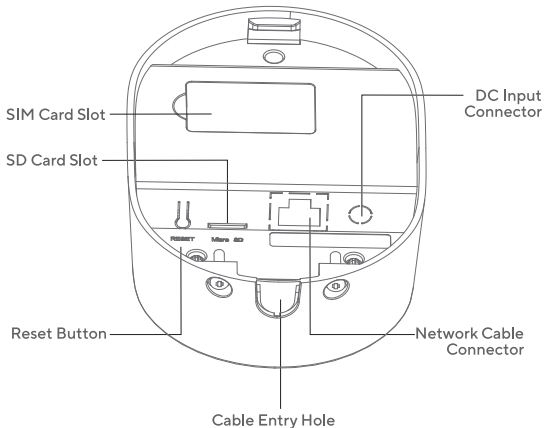
Electric Drill

# Device Interface



## LED Indicator

|                     |                                       |
|---------------------|---------------------------------------|
| <b>Solid Red:</b>   | Network offline or camera malfunction |
| <b>Solid Green:</b> | Functioning normally                  |
| <b>Blue Blink:</b>  | Camera is in pairing mode             |

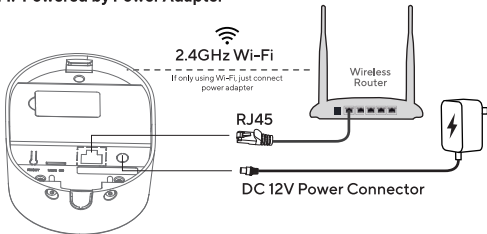


### **Reset button**

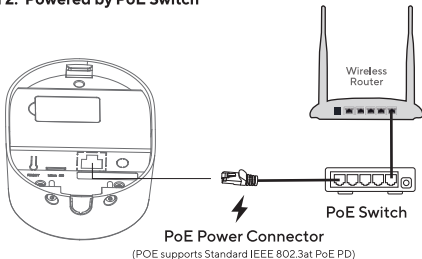
Press and hold for more than 5 seconds to manually enter pairing mode, the indicator light will turn Blue Blink.

# Wiring Diagram

## Option 1: Powered by Power Adapter

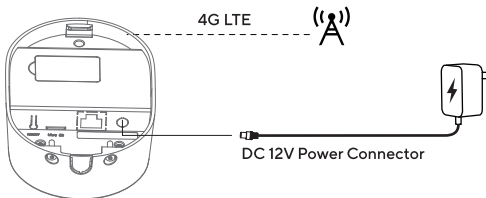


## Option 2: Powered by PoE Switch



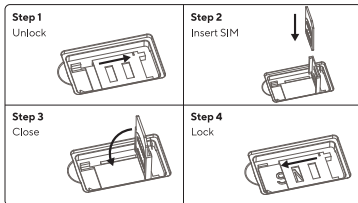
### Option 3: 4G LTE connetion (optional)

Notice: 4G version does not support Wi-Fi



## SIM Card Installation (Only for 4G version)

Notice: Please power off the device to install the SIM Card.



# Ulticam

A Brand of Xthings

© 2025 Xthings Inc. All rights reserved.

Ulticam and Ulticam logo are trademarks of Xthings Inc. or its affiliates registered in the U.S. and other countries and regions. All other trademarks are the property of their respective owners.

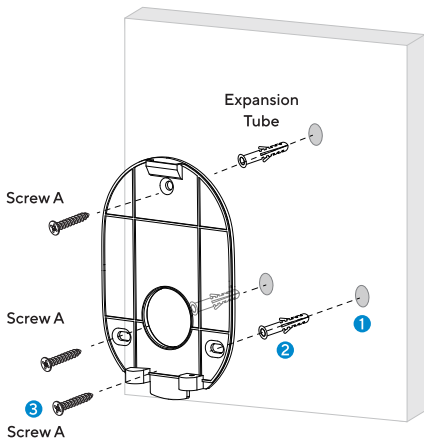
Xthings Inc. 47703 Fremont Boulevard, Fremont, CA 94538 Engineered by Xthings, assembled in China.



# Mounting Instructions

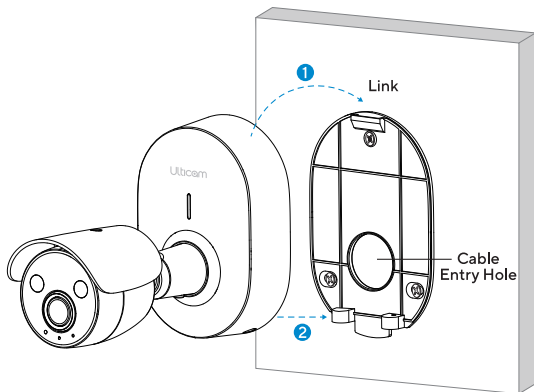
## Step 1

Drill holes in the wall using an electric drill, insert the expansion tubes, and then secure the mounting plate to the wall using screw A.



## Step 2

1. Hang the upper part of the Ulticom IQ back cover onto the mounting plate.
2. Snap the bottom of the back cover onto the mounting plate.



### Step 3

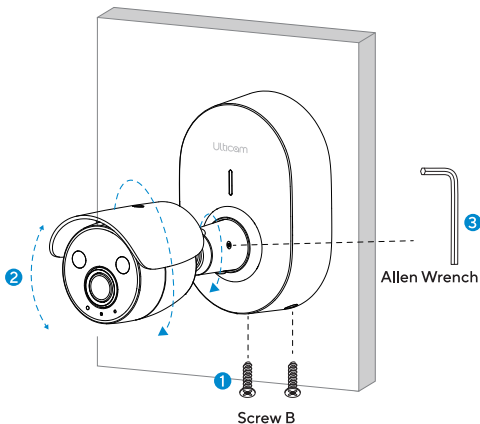
Secure it at the bottom with screw B.

### Step 4

Adjust the lens angle for the best view.

### Step 5

Tighten the fastening bolt with an allen wrench.



# Easy Setup

## 1. Get U home App Ready

### 1.1 Download App

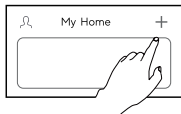
Scan following QR code to download the app, or search "U home" in App Store(iOS) and Google Play(Android).



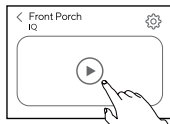
### 1.2 Create Account and Login

## 2. Add New Camera

Tab on the "+" icon in the App's homepage to add a new camera and follow the App's instructions to complete the setup process.



Add and Play



# FCC Warning:

This equipment has been tested and found to comply with the limits for a Class B digital device, pursuant to part 15 of the FCC Rules. These limits are designed to provide reasonable protection against harmful interference in a residential installation. This equipment generates, uses and can radiate radio frequency energy and, if not installed and used in accordance with the instructions, may cause harmful interference to radio communications. However, there is no guarantee that interference will not occur in a particular installation. If this equipment does cause harmful interference to radio or television reception, which can be determined by turning the equipment off and on, the user is encouraged to try to correct the interference by one or more of the following measures:

- Reorient or relocate the receiving antenna.
- Increase the separation between the equipment and receiver.
- Connect the equipment into an outlet on a circuit different from that to which the receiver is connected.
- Consult the dealer or an experienced radio/TV technician for help.

## **Caution:**

Any changes or modifications to this device not explicitly approved by manufacturer could void your authority to operate this equipment.

This device complies with part 15 of the FCC Rules. Operation is subject to the following two conditions:

(1) This device may not cause harmful interference, and (2) this device must accept any interference received, including interference that may cause undesired operation.

The device has been evaluated to meet general RF exposure requirement.

This equipment complies with FCC radiation exposure limits set forth for an uncontrolled environment.

This equipment should be installed and operated with minimum distance 20cm between the radiator & your body.



**FCC ID: 2BKHH-IQ01**